

MAIN STORIES
**OBAMA'S
PATH TO
A DEAL**

p.4



TALKING POINTS
**Can Judaism
survive
assimilation?**

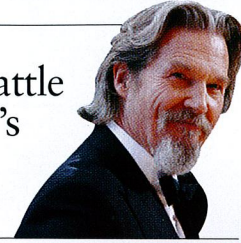
p.17



PEOPLE

**The big battle
in Bridges's
marriage**

p.10



THE WEEK

THE BEST OF THE U.S. AND INTERNATIONAL MEDIA

A second Civil War

Why Tea Party rebels
are so frantic
to stop Obamacare

p.6



OCTOBER 18, 2013 VOLUME 13 ISSUE 639

639 BOSTON MA 02109-4699
538 10 POST OFFICE SQ
P033 LANDVEST INC
0101 MAYA ELISAYEFF
#061D60032053235666# 1238 240CT15
#BXNNLCK *****AULTD**5-DIGIT 02109
|||

ALL YOU NEED TO KNOW ABOUT EVERYTHING THAT MATTERS

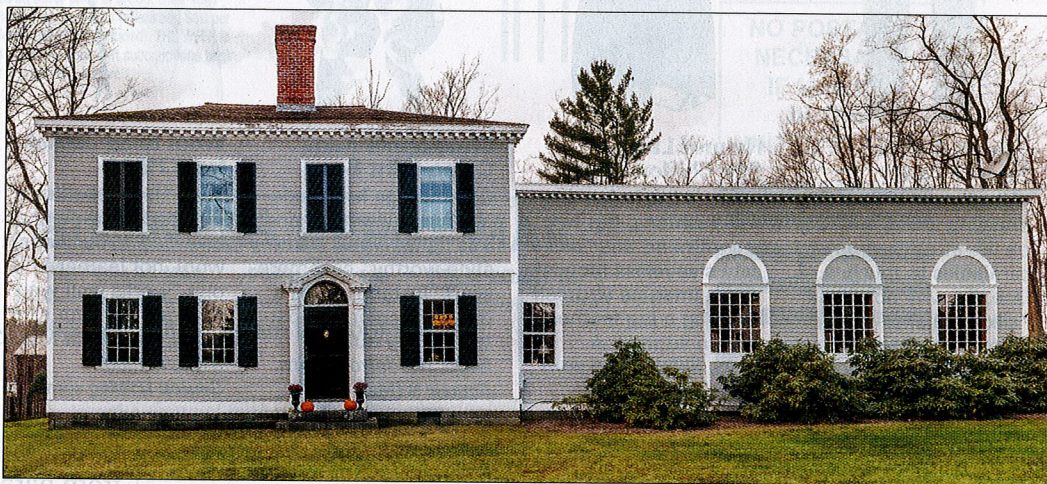
WWW.THEWEEK.COM

This week: Homes in the Berkshires

1 ▲ Great Barrington This nine-bedroom contemporary home, built in 2007, is located on 119 acres with views of the lower Berkshires. Details include a media room, floor-to-ceiling glass walls, and an outdoor lap pool. Among the nearby cultural institutions are the Norman Rockwell Museum and the Berkshire Theatre Group. \$5,250,000. John Borden and Mimi Harson, Litchfield Hills/Sotheby's International Realty, (860) 435-5921



2 ► Worthington The Jonathan Woodbridge House was built in 1806 in a late Georgian style. Set on 2.3 acres, the four-bedroom home underwent a complete restoration in the 1980s. Details include six fireplaces, a sitting parlor, French doors, and a sunroom with skylights. \$795,000. Keith Ross, Landvest, (978) 544-5767



3 ◀ Otis Designed by an award-winning architect, this five-bedroom home overlooks Big Pond. Details include Brazilian hardwood floors, a floating staircase, and a great room with a vaulted ceiling and a stone fireplace. The 2-acre property features a flagstone patio and a hot tub. \$2,300,000. Nancy Kalodner, Benchmark Real Estate, (413) 528-2994

